

The background features a collage of religious art and musical notation. At the top left is a detail of the Virgin Mary's face from a painting. Below it is a detail of the Virgin Mary's hands. To the right is a detail of the Virgin Mary's chest. In the center is a detail of the Virgin Mary's torso. At the bottom is a detail of the Virgin Mary's feet. The background is filled with handwritten musical notation in various colors and styles.

orlando

CHAMBER CHOIR

SOLOISTS FROM THE FIERI CONSORT

WILL DAWES DIRECTOR

Dietrich

Membra Jesu Nostri

Buxtehude

BOJAN CICIC VIOLIN

DOMINIKA FEHER VIOLIN

CHELYS CONSORT OF VIOLS

DAVID MILLER THEORBO

OLIVER JOHN RUTHVEN ORGAN

CHRISTOPHER KENT READER

THURSDAY

10 MARCH 2016 | 18:30

ST SEPULCHRE

HOLBORN VIADUCT

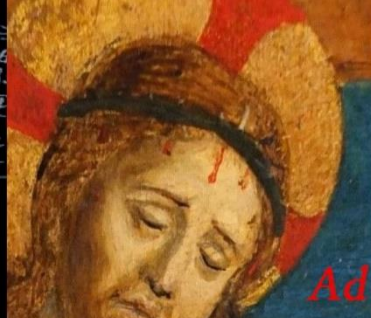
LONDON EC1A 2DQ

TICKETS £14 | CONCESSIONS £10

FROM 07709 521 433 OR

ORLANDOCHOIR.ORG.UK

Ad pedes
i-N-i Sonata,
Ecco super montes
Dieter: Buxtehude:



Ad faciem

According to legend, when Bach was 20 he walked more than two hundred miles to meet Buxtehude, the most influential composer of his time.



Ad cor

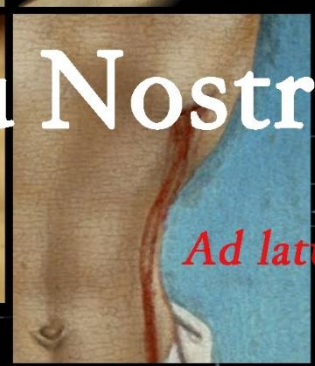


Ad manus

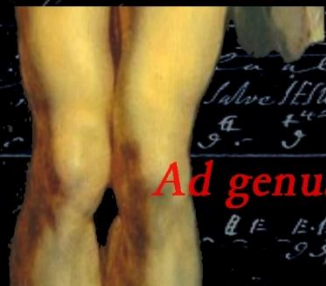
Membra Jesu Nostri

Dating from 1680, Dietrich Buxtehude's *Membra Jesu Nostri* is a cycle of seven cantatas which contemplate different parts of the crucified Christ's body, starting with his pierced feet and ending with his face. Each corporal allusion in the text is the starting point for a meditation on a different aspect of Christian revelation. The music ranges from harmonic suspensions suggestive of great suffering to passages of a *Song-of-Songs*-like sensuality and sections of timeless simplicity.

Ad pectus



Ad latus



Ad genua

Buxtehude's masterpiece was a favourite of our friend, fellow bass and chairman David Harris who sadly passed away in March 2015. Orlando Chamber Choir dedicates this concert to his memory.



Ad pedes